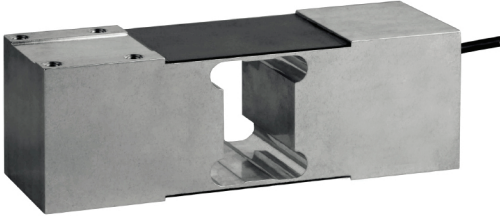


제품 소개

- PC60은 벤치 스케일 및 플랫폼 스케일, 의료 저울에 적합한 중형 로드셀 입니다.
- 내구성을 보장하기 위해 알루미늄과 포팅 컴파운드로 환경적으로 밀봉됩니다.
- 모델은 30kg ~ 750kg 까지 다양한 용량으로 3000d OIML인증된 제품입니다.

특징 Feature

- 알루미늄 구조 / 포팅으로 환경 친화적인 밀봉
- 플랫폼 규격 600 x 600mm
- 다양한 용량 범위
- 로드셀 케이블 : 폴리 우레탄 3m x 5.8mm
- EN 60 529에 따른 보호 : IP 67

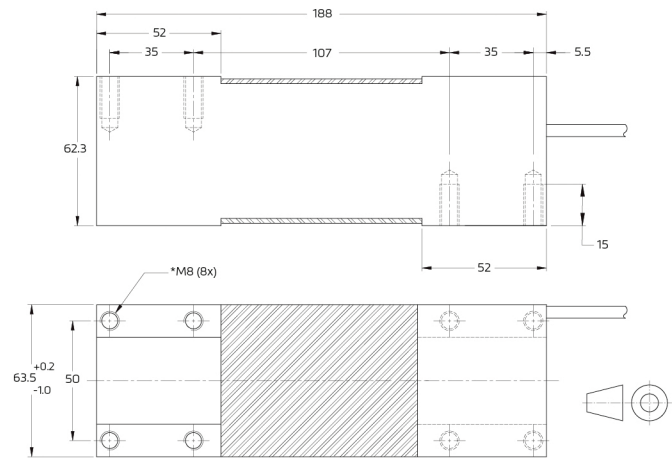


specifications

Maximum capacity (E <sub>max</sub> )	kg	30 / 50 / 100 / 150 / 200 / 300 / 500 / 750
Accuracy class according to OIML R60		(GP) C3
Maximum number of verification intervals (n <sub>max</sub> )		n.a. 3,000
Minimum load cell verification interval (V <sub>min</sub> )		n.a. E <sub>max</sub> / 7,500
Temperature effect on minimum dead load output (TC <sub>0</sub> )	%*RO/10°C	± 0.0400 ± 0.0187
Temperature effect on sensitivity (TC <sub>RO</sub> )	%*RO/10°C	± 0.0200 ± 0.0100
Combined error	%*RO	± 0.0500 ± 0.0200
Non-linearity	%*RO	± 0.0400 ± 0.0166
Hysteresis	%*RO	± 0.0400 ± 0.0166
Creep error (30 minutes) / DR	%*RO	± 0.0600 ± 0.0166
Optional: Min. load cell verification interval (V <sub>min</sub> opt)		n.a. E <sub>max</sub> / 15,000
Optional: Temp. effect on min. dead load output (TC <sub>0</sub> opt)	%*RO/10°C	n.a. ± 0.0093
Rated Output (RO)	mV/V	2 ± 10%
Zero balance	%*RO	± 5
Excitation voltage	V	5..15
Input resistance (R <sub>ic</sub> )	Ω	413 ± 20
Output resistance (R <sub>out</sub> )	Ω	350 ± 25
Insulation resistance (100 V DC)	MΩ	≥ 5000
Safe load limit (E <sub>lim</sub> )	%*E <sub>max</sub>	150
Ultimate load	%*E <sub>max</sub>	300
Safe side load	%*E <sub>max</sub>	100
Maximum platform size; loading acc. to OIML R76	mm	600 x 600
Maximum off centre distance at maximum capacity	mm	200
Compensated temperature range	°C	-10...+40
Operating temperature range	°C	-20...+65 (ATEX -20...+60)
Load cell material		aluminium, optional clear anodized
Sealing		potted
Protection according EN 60 529		IP67
Packet weight	kg	2

The limits for Non-Linearity, Hysteresis, and TC<sub>RO</sub> are typical values.  
The sum of Non-linearity, Hysteresis and TC<sub>RO</sub> meets the requirements according to OIML R60 with p<sub>ic</sub>=0.7.

product dimensions (mm)



Mounting bolts M8 8.8; torque 25 Nm. Torque value assumes oiled threads.  
\* Unified thread 5/16-18 UNC is available.

wiring

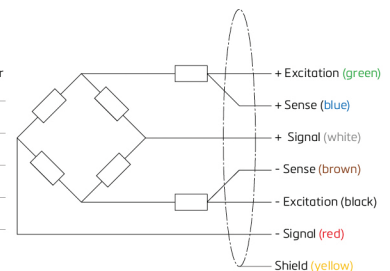
The load cell is provided with a shielded, 6 conductor cable (AWG 26).

Cable jacket: polyurethane

Cable length: 3 m

Cable diameter: 5.8 mm

The shield is connected to the load cell body



RoHS  
compliant

