



Since 1994, DIGITAL LEADER Axis Sensitive Co. Ltd
Industrial Explosion Proof Load Cell



MODEL : ULB-EXP

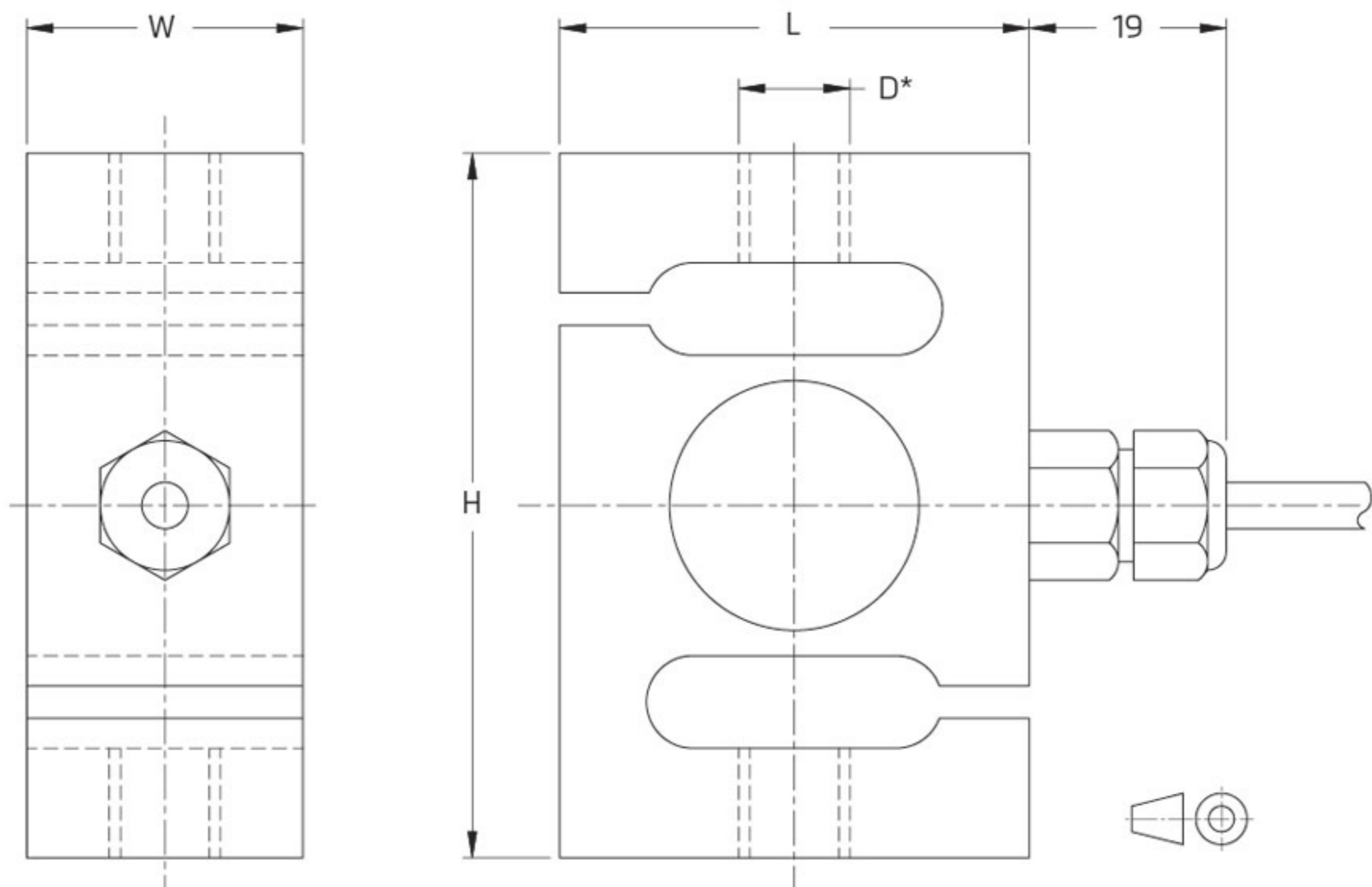


RoHS
compliant



제품 규격 [UNIT : mm]

Product Specification



Type	H	L	W	Metric thread D-M	Unified thread D-U	Unified thread D-H
100 kg...500 kg	76.2	49	30	M12	1/2-20	5/8-18
1000 kg				M16		
2000 kg	86.1	76.2			5/8-18	
3000 kg	88.7	88.7	40	M20 x 1.5	3/4-16	
5000 kg	146	91.2	56.4	M24 x 2	1-12	

* 3 versions available: ULB-xxxx kg-M (with metric thread), ULB-xxxx kg-U (with unified thread) or ULB-xxxx kg-H (with special thread)

wiring

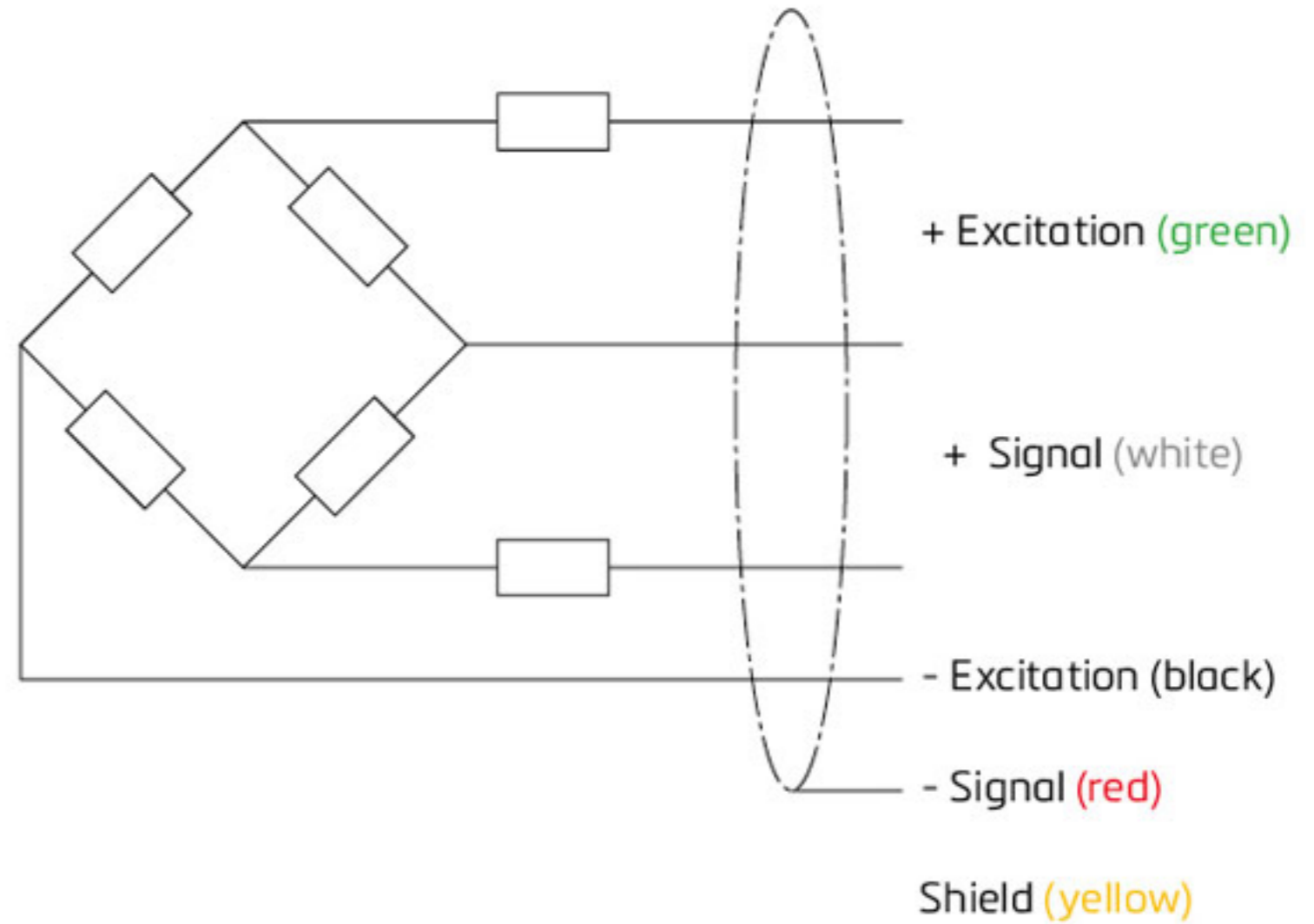
The load cell is provided with a shielded, 4 conductor cable (AWG 24).

Cable jacket: polyurethane

Cable length: 6 m

Cable diameter: 5 mm

The shield is floating
(On request the shield can be connected to the load cell body)



- ▶ SB6는 20kg~204kg 까지의 고정밀 계량 어플리케이션을 위한 로드셀
- ▶ Stainless Steel 구조와 완벽한 밀폐 봉인된 독특한 벤딩 빔 로드셀로 최적의 계량 성능 보장, 최적의 계량 성능을 보장

Maximum capacity (E_{max})	kg	100 / 200 / 500 / 1,000 / 2,000 / 3,000 / 5,000	100 / 200	500 / 1,000 / 2,000 / 3,000 / 5,000
Minimum dead load (E_{min})	$\% * E_{max}$		0	
Accuracy class according to OIML R60		(GP)	G3**	C3*
Maximum number of verification intervals (n_{max})		n.a.		3,000
Minimum load cell verification interval (v_{min})		n.a.		$E_{max} / 12,000$
Temperature effect on minimum dead load output (TC_0)	$\% * RO / 10^{\circ}C$	± 0.0400		± 0.0116

Temperature effect on sensitivity (TC _{RO})	%*RO/10°C	± 0.0200	± 0.0100
Combined error	%*RO	± 0.0500	± 0.0200
Non-linearity	%*RO	± 0.0400	± 0.0166
Hysteresis	%*RO	± 0.0400	± 0.0166
Creep error (30 minutes) / DR	%*RO	± 0.0600	± 0.0166
Rated Output (RO)	mV/V	2 ± 0.1%	
Calibration in mV/V/W (A...I classified)	%	± 0.05 (± 0.005)	
Zero balance	%*RO	± 5	
Excitation voltage	V	5...15	
Input resistance (R _{LC})	Ω	1,100 ± 50	
Output resistance (R _{out})	Ω	1,000 ± 2	
Insulation resistance (100 V DC)	MΩ	≥ 5,000	
Safe load limit (E _{lim})	%*E _{max}	200	
Ultimate load	%*E _{max}	300	
Compensated temperature range	°C	-10...+40	
Operating temperature range	°C	-20...+65 (ATEX -20...+60)	
Load cell material		stainless steel 17-4 PH (1.4548)	
Sealing		potted	
Protection according EN 60 529		IP67	
Packet weight	kg	1.0 (100kg, 200kg), 1.1 (500kg, 1,000kg), 1.85 (2,000kg), 2.62 (3,000kg), 5.22 (5,000kg)	

* Accuracy class is only valid for tension load. ** corresponds to C3 quality, test certificate not available
The limits for Non-Linearity, Hysteresis, and TC_{RO} are typical values.
The sum of Non-linearity, Hysteresis and TC_{RO} meets the requirements according to OIML R60 with p_{LC}=0.7.

- **Stainless Steel 구조 / 밀폐 봉인 구조**
- **인장, 압축 겸용 / 다양한 용량 / 높은 정밀도**
- **EN 60 529에 따른 보호 : IP 67**
- **로드셀 케이블 : 폴리 우레탄 6m X 5mm**